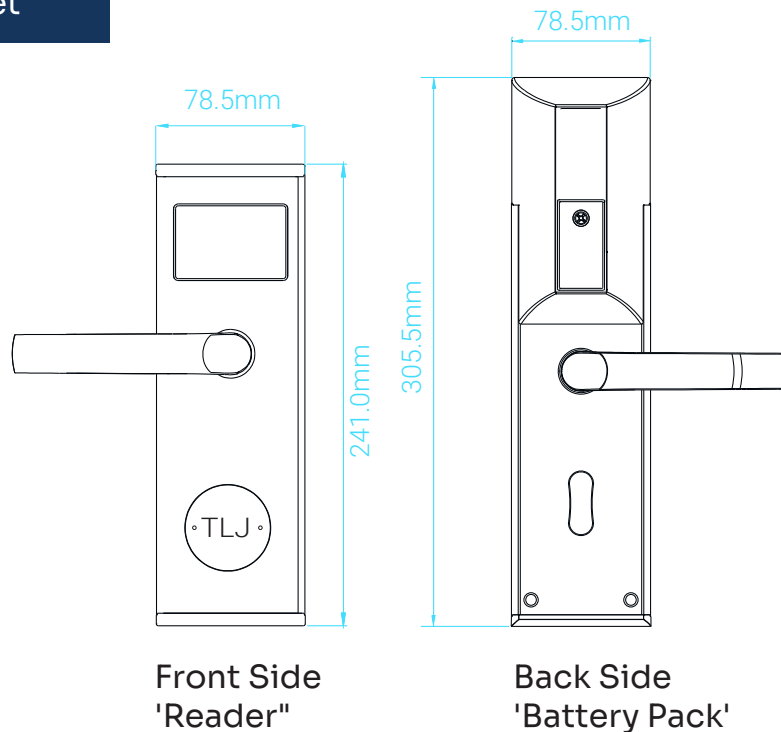


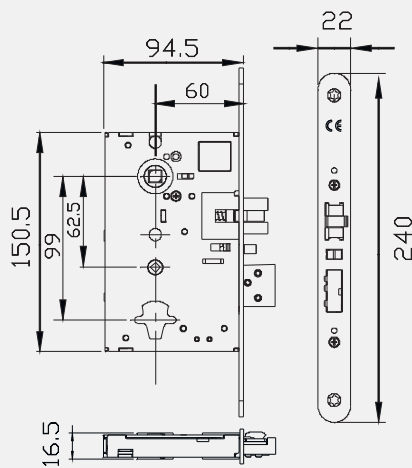
Technical Data Sheet



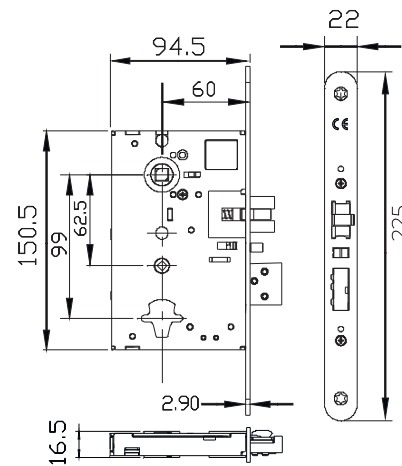
Power	4 x AA battery (TLJ batteries recommended)
Material	Zink Alloy & Polycarbonate Stainless steel SUS304
Metal Finishes	Satin Chrome (SR) . Polished Chrome (PC) Satin Gold (SG) . Polished Gold (PG)
Battery location	Internal handle set
Emergency Open	Mechanical over-ride cylinder, physical key
Operating Temp	-20°C to 70°C
Certifications	EN14846 - Mechanical load & cycle testing EN1634-1 - Fire tested to FD30 & FD60 doors EMC, R&TTE & LVD Directives PAS24 - Physical attack security test CE Marked, CertiFire TS81
Privacy Bolt	Hardened with anti drill pins

Lockcase Options

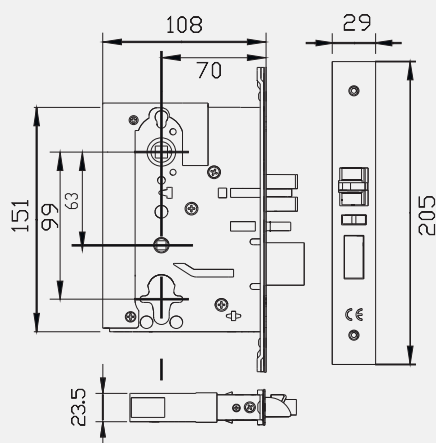
European - EUR1/240
60mm Backset



European - EUR2/225
60mm Backset



American - AM1/205
70mm Backset



Fire Compliance Routes

- Primary over-burns in both directions on multiple types of cores, frames, leaf sizes, and hardware on both FD30 & FD60 doors.
- Field of Application report from IFC-KIWA for both FD30 and FD60 doorsets.
- Warrington Fire's 3rd party annual assessment known as CertiFire.
- Door core manufacturers' global EXAP
- UKCA & CE Marking

