



**HANDS
FREE
MOBILE
KEY**

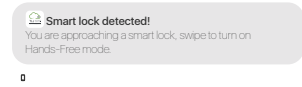


HOW DOES IT WORK?

Operator creates the Mobile Key using TLJ Qcloud platform or via a 3rd party integration. Parameters include: start & end time/date; doors list; elevator access privileges; is Sharing of Key allowed and, if so, how many times?



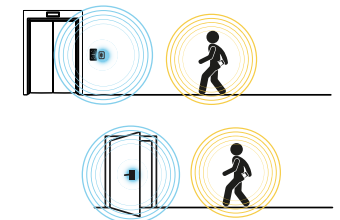
As the user approaches a TLJ Beacon (usually positioned on entrances) the app will receive a notification.



Once Smartphone security is passed, doors can be unlocked upon approach - even with the smartphone in a pocket or handbag. Once a door has been unlocked it won't be unlocked again until the next Hands Free session. This prevents repetitive unlocking if the user remains close to the door.



Elevators can also utilise the same technology; access to specific floors only can be specified. As the user reaches the final destination (usually their apartment or studio) Hands Free functionality will time-out so their phone battery is not drained.





KEY FEATURES

Security vs. Convenience

Beacons detect user's phone approaching; notification alert to begin Hands Free session. Secure smartphone unlock is required on first door to activate (PIN, pattern, facial recognition etc). Automatic door unlocking begins thereafter, including elevator control.

Battery Life

Automatic lock detection only takes place during a Hands Free session, which expires after an adjustable time period. Beacon status can also be turned off.

Options

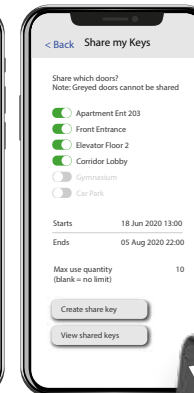
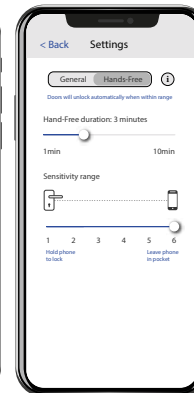
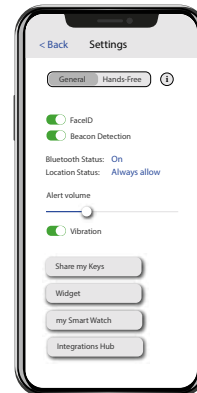
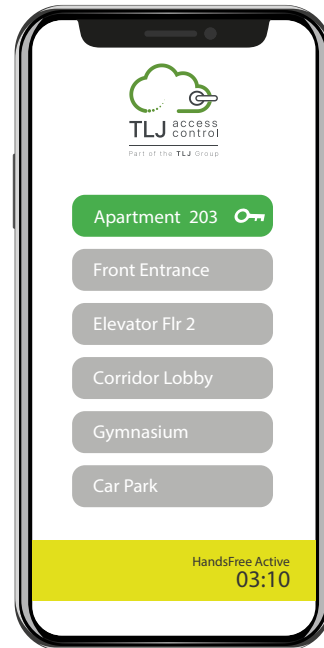
Multitude of options within the app, such as toggling the range at which doors should unlock; Hands Free session duration; in-app notification volume & vibration. There is even a manual mode where a door is unlocked with a single tap.

Widget & Wearables

Hands Free can be activated by a useful widget option as well as Beacons. Smart Watches enhance the user experience by scanning the user's journey throughout the building for valid access points.

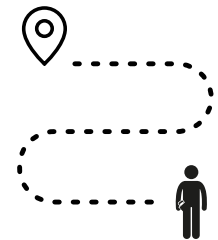
Share Keys

An optional feature, controlled by the operator, is a new function allowing users to Share their Keys. Popular in residential and leisure sectors, it allows varying amounts of control for the operator.



Smart lock detected!

You are approaching a smart lock, swipe to turn on Hands-Free mode.





SDK & API



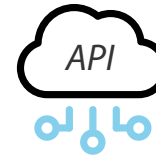
SDK

TLJ offers a thoroughly comprehensive SDK which allows app developers to utilise the Hands Free & Manual door operating functions within 3rd party apps.

Both Apple and Android libraries are available, along with demonstration apps, full documentation and an onboarding session. Physical sample locks may also be provided for testing purposes.

A full approval procedure will be conducted by the TLJ tech team to ensure any 3rd party builds conform to operational standards. A certification scheme is in place for both Apple and Android builds.

Some popular approved vendors:



Fully cloud based, the TLJ API offers 3rd party integrators the ability to control TLJ Mobile Keys.

Create Mobile Keys for specific doors, multiple doors, elevators, car park barriers, lockers and more. Start time and date, as well as expiry time and date, can be specified.

Revoke Mobile Keys prior to the expiry date, as well as **pause/unpause** them when a complete revoke is not suitable.

Assess whether a Mobile Key has been **retrieved** by its owner, perhaps triggering an automated workflow to offer a reminder.

Full **audit** trail of when and where a Mobile Key is used.

Create

Revoke

Pause

Retrieved

Audit



UNLOCK IT
FROM YOUR POCKET



HQ - 68/78 Leads Road, Hull,
East Yorkshire, HU7 0BY, UK
www.tljlimited.com
0044 (0) 1482 830334
enquiry@tljlimited.com

WHAT IS HANDS FREE MOBILE KEY?



The evolution of smartphone-based access control, Hands Free Mobile Key is the answer to all those who say a traditional door key is simpler and easier to use than a digital solution.

As with conventional Mobile Keys, the user's smartphone is employed as the access token, securely connecting with the authorised locking device via Bluetooth Low Energy (BLE).

Hands Free takes a leap forward in removing the need for user intervention. Beyond an initial security check, the user can journey throughout the building with no further action required. As long as they have permission, locks will automatically open for them when their Smartphone is in range.

The Operator controls the system using TLJ's Qcloud software, or via many compatible smart building integration platforms. As an option, users can even be given permission to send temporary Mobile Keys to visitors and guests.

With Handsfree Mobile Key, you really can Unlock it from your Pocket!

KEY BENEFITS

Increased Revenue

Elevating resident experience means increased revenue. Residents and tenants are willing to pay more for a better living experience. Recent experience in the United States indicates that millennial renters would pay an average of 20% more for an apartment that includes smart home features such as Hands Free Mobile Key.

Customer Acquisition and Retention

Delivering a first class user experience helps operators appeal to prospective new residents, and retain those coming up for renewal beyond their current tenancy agreement. Hands Free Mobile Key appeals to those digital-first customers, e.g. millennials, who live their lives through mobile devices.

Flexibility and Convenience

Hands Free Mobile Key allows complete customisation of a user's journey throughout the building, even down to which floors the lift is permitted to take them. Combine this with the ultimate contactless experience of being able to get from street-to-sofa with zero user intervention: so convenient when weighed down with bags full of heavy shopping!

Enhanced Operational Efficiencies

A multitude of operational benefits come from the implementation of Hands Free Mobile Key. No more check-in queues at reception, further enhanced by the ability to issue Mobile Keys in batches, directly from TLJ's Cloud based software.

Two-way data connection allows notifications, such as low battery alerts, are automatically sent to the operator, affording them real-time visibility of their access control system.

