

magnetic lock

Data Sheet



Electro - Magnetic Locks



An electromagnetic lock, 'magnetic lock', or 'maglock' is a locking device that consists of an electromagnet and an armature plate. Direct pull electromagnetic locks are inherently fail-safe.

Typically the electromagnet portion of the lock is attached to the door frame and a mating armature plate is attached to the door. The two components are in contact when the door is closed. When the electromagnet is energised, a current passing through the electromagnet creates a magnetic flux that causes the armature plate to attract to the electromagnet, creating a locking action. Because the mating area of the electromagnet and armature is relatively large, the force created by the magnetic flux is strong enough to keep the door locked even under stress.

Variants



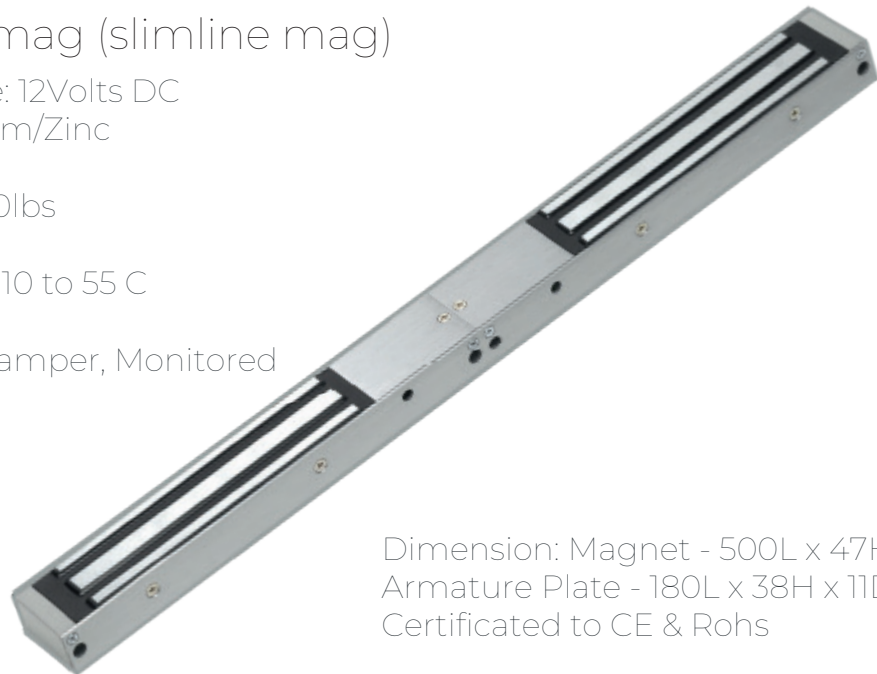
Dimension: Magnet - 250L x 47H x 25D (mm)
Armature Plate - 180L x 38H x 11D (mm)
Certificated to CE & Rohs

Single Mini-mag (slimline mag)

Operating Voltage: 12Volts DC
Material: Aluminium/Zinc
Current: 380mA
Holding Force: 600lbs
Weight: 1.8Kg
Operating Temp: -10 to 55 C
Humidity: 0 - 95%
Status LED, Anti-Tamper, Monitored

Double Mini-mag (slimline mag)

Operating Voltage: 12Volts DC
Material: Aluminium/Zinc
Current: 500mA
Holding Force: 600lbs
Weight: 4.0Kg
Operating Temp: -10 to 55 C
Humidity: 0 - 95%
Status LED, Anti-Tamper, Monitored



Dimension: Magnet - 500L x 47H x 25D (mm)
Armature Plate - 180L x 38H x 11D (mm)
Certificated to CE & Rohs

Single Standard-mag

Operating Voltage: 12Volts DC
Material: Aluminium/Zinc
Current: 500mA
Holding Force: 1200lbs
Weight: 5.0Kg
Operating Temp: -10 to 55 C
Humidity: 0 - 95%
Status LED, Anti-Tamper, Monitored



Dimension: Magnet - 266L x 68H x 40D (mm)
Armature Plate - 185L x 62H x 16D (mm)
Certificated to CE & Rohs

Double Standard-mag

Operating Voltage: 12Volts DC
Material: Aluminium/Zinc
Current: 600mA
Holding Force: 1200lbs
Weight: 8.0Kg
Operating Temp: -10 to 55 C
Humidity: 0 - 95%
Status LED, Anti-Tamper, Monitored



Dimension: Magnet - 532L x 68H x 40D (mm)
Armature Plate - 185L x 62H x 16D (mm)
Certificated to CE & Rohs

External Standard-mag

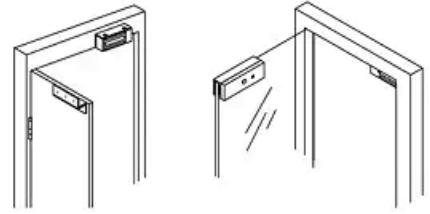
Operating Voltage: 12Volts DC
IP Rated: IP67
Material: Aluminium/Zinc
Current: 420mA
Holding Force: 1500lbs
Weight: 3.7Kg
Operating Temp: -10 to 55 C
Humidity: 0 - 95%
Status LED, Anti-Tamper, Monitored



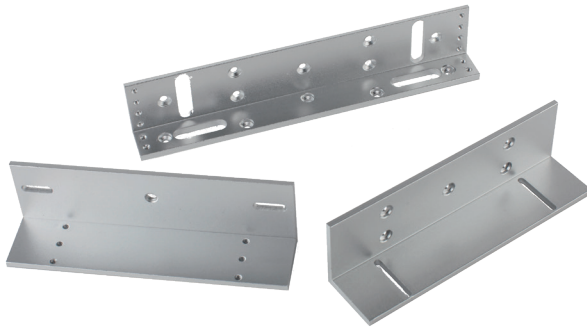
Dimension: Magnet - 222L x 62H x 42D (mm)
Armature Plate - 185L x 61H x 17D (mm)
Certificated to CE & Rohs

Accompanying accessories

In certain situations an electro-magnetic lock may require an additional mounting accessory in order to be correctly installed on the door.



Such as a Z & L bracket for inwards opening doors, or a Glass door mounting bracket where the door set does not have a frame which is suitable for fixing screws.



TLJ Access Control

68/78 Leads Road, Hull, East Yorkshire, HU7 0BY, UK
www.TLJgroup.com 0044 (0)1482 830334



TLJ access
control

Part of the **TLJ** Group