



TLJ access
control

Part of the TLJ Group





in the door

electronic lock set

Invisible by TLJ is a unique access control lock set, where the essentials are housed within the lock case itself. Traditionally, the electronic circuit board and batteries are part of the handle escutcheon located on front/back face of the door. The Invisible by TLJ however sets out to be different, targeting higher specification, modern schemes from a range of sectors such as residential and hospitality.

design-led
access control





TLJ's Levers

TLJ supply a range of levers to match any aesthetic



ANGULAR

The angular lever is the perfect choice for any modern or post-modern design going for a geometric or smart style



ELBOW

The elbow lever is the definition of simplicity and brings a level of class, sleekness and usability.



WAVY

The wavy lever is the smoothest feeling option providing a luxury look and feel to any property



WING

The wing lever is a great option for any property, but specifically when you need to add a sense of class



the indicator

lever handle

escutcheon

euro cylinder

Credentials

Physical Credentials



Keycards, fobs and wristbands

The increasingly popular RFID (Radio Frequency Identification) credentials are a common choice for those upgrading from older magnetic swipe systems. As is common with most of those legacy door locks, RFID credentials are not affected by being held close to smartphones as is often the case with magnetic cards.

Although other card types can be used, TLJ standardise the 1K MiFare chipset. It extremely reliable and one of the most widely used on the planet, making it perfect for integrating with other systems.

Moreover, the 1K credentials' core technology utilises 16 blocks of memory, this offers advanced functionality for today but also in the future. All physical credentials can be customised with your own branding(minimum quantity orders may apply).

Bamboo Keycards



Bamboo key cards are a great eco-friendly alternative to the traditional plastic version, offering equal durability and functionality.

Sustainable wood is a renewable and biodegradable resource, which many customers have found to be widely requested by the modern day traveller or millennial renter.

Credentials

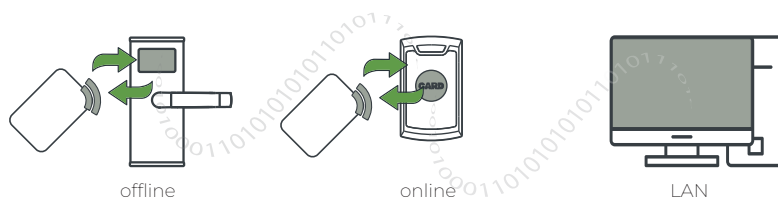
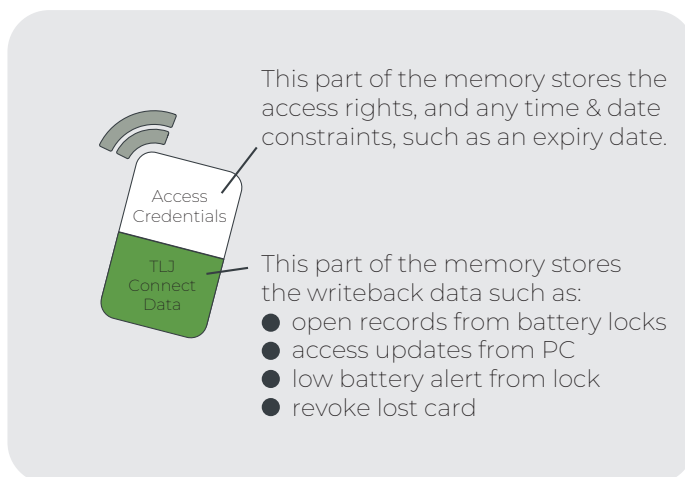


data-on-card

TLJ utilise the memory storage on options such as key cards or fobs. Which doors are accessible - from when and until when - is written onto the credential itself. This is in contrast to storing a list of valid card ID's on the door lock itself, eliminating the need for all door locks to be online, all the time. Revoking access is performed by replacement logic, so even a lost credential doesn't require the operator to visit the door. This type of technology is referred to as offline access control.

writeback

A 'hybrid' of an online & offline access control system, where the credential is used to carry information from and to the offline lock as it passes through online hotspot readers located on public doors, such as the front door or the elevator.



Mobile Keys



"It's access control turned on its head, let the key be online rather than the door lock itself, saving the costly internal network infrastructure."
TLJ's Chief Technology Officer, Luke Martin.

TLJ Mobile Keys™ are a virtual access credential. The user does not need to collect a keycard for example, rather the Mobile Key can be retrieved directly by their smartphone. The key is stored securely in the cloud and is also end to end encrypted. Add this to the requirement of FaceID, FingerPrint or PinCode to unlock the smartphone to gain access to the Mobile Key....now that's secure!

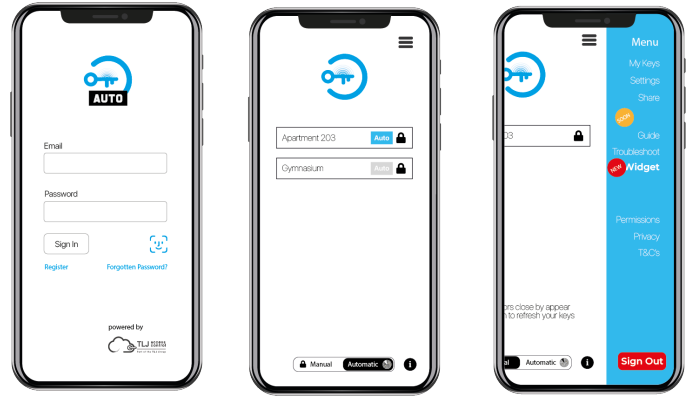
Mobile Keys Benefits

Real-Time

- Live 'as they happen' door open records
- Instantly cancel a lost or stolen smartphone key
- Create instant keys for residents, visitors & staff
- Real-time visibility & control of your building
- Extend or amend access rights remotely
- Low battery alerts in real-time for easy maintenance
- Current door status in app; unlocked, locked, privacy on/off
- Fewer lock-outs. A card is easy to forget or leave behind
- Digital signature prevents passing of user login credentials
- Flexibility, works alongside physical keys
- Works with iOS & Android



Mobile Keys Options



TLJ Native App

TLJ Branded app provided by TLJ
Hosted in both App Store & Play Store
Fully maintained by TLJ
No other 3rd party providers required

Integrate TLJ Mobile Keys™ into your own app
Improve performance & usability experience
Park maps, parcel collection, paying rent, booking amenities & opening doors: all in one app
Prevent 'app fatigue'
TLJ approval process of all new integrations
Popular middleware & IoT integrations already approved
Industry leading dev support with Slack chat channel



white-label

Own-branded app provided by TLJ
Familiarity: improve uptake of app download
Hosted in both App Store & Play Store
Fully maintained by TLJ
No other 3rd party providers required

Technology Platforms



TLJ hardware can be controlled via two different operating platforms in Qlite & Qcloud. The fundamental differences between them is the fact Qlite is an on premise solution compared to Qcloud which is a hosted database from a high security data centre.

A corrupt local database or a ransomware attack have been a growing part of disaster recovery strategies for years, but due to the increasingly vast internet speeds and global demand, hosted databases are the 'new normal', boasting enterprise grade security & automated incremental backups.

Compare

	Qlite	Qcloud
TLJ Mobile Keys™	●	●
HandsFree TLJ Mobile Keys™	●	●
RFID credentials	●	●
Batch key issuing	●	●
Local on-premise database	●	
In-house IT dep required to maintain	●	
Physical IT infrastructure required	●	
Unlimited doors	●	
Fixed monthly payment plan	●	●
Inclusive Prime Service Plan*	●	●
Inclusive software updates		●
Cloud Hosted database		●
API for 3rd party integrations		●
Automatically backed up		●
SDK for own app development		●
Qbot included		●
Mobile Keys hosting included		●
Option to enable "Share mobile key"*		●
Virtual Intercom		●

Qlite

Qcloud

*Where operator allows

Accreditations

EN14846:2008 - Electromechanically operated locks EN50371:2012
- RT&TTE, Low-power human RF exposure & european EMC, LVD directive



EN 1634-1:2014 - Fire resistance & smoke control for a minimum of 30/60 minutes



Third-party certification body that assures performance, quality, reliability and traceability of fire protection products. Recognised by regulatory authorities worldwide, it is an internationally respected mark of fire safety and one of the most authoritative in the industry.



PAS24 - Physical security attack test, including mechanical load testing BS6375-2 and cycle testing of 50,000 cycles EN1191



Kiwa is an accredited certification body and test laboratory. It is accredited by European accreditation bodies and is a Notified Body for various directives and regulations. TLJ locks are thoroughly fire tested by KIWA on a substantial amount of door types, densities and sizes.



All TLJ locks are rigorously tested to comply with FCC standards and has been proven to do so.



Grade 2: The American National Standards Institute oversees Standards and Conformity Assessment Activities in The United States. **PENDING**



Tested and successfully passed a 10C fire burn test and subsequent hose stream test, in line with state code in the US & Canada



Made in Britain is an internationally-recognised registered trademark which promotes and acknowledges the very best of British manufacturing.



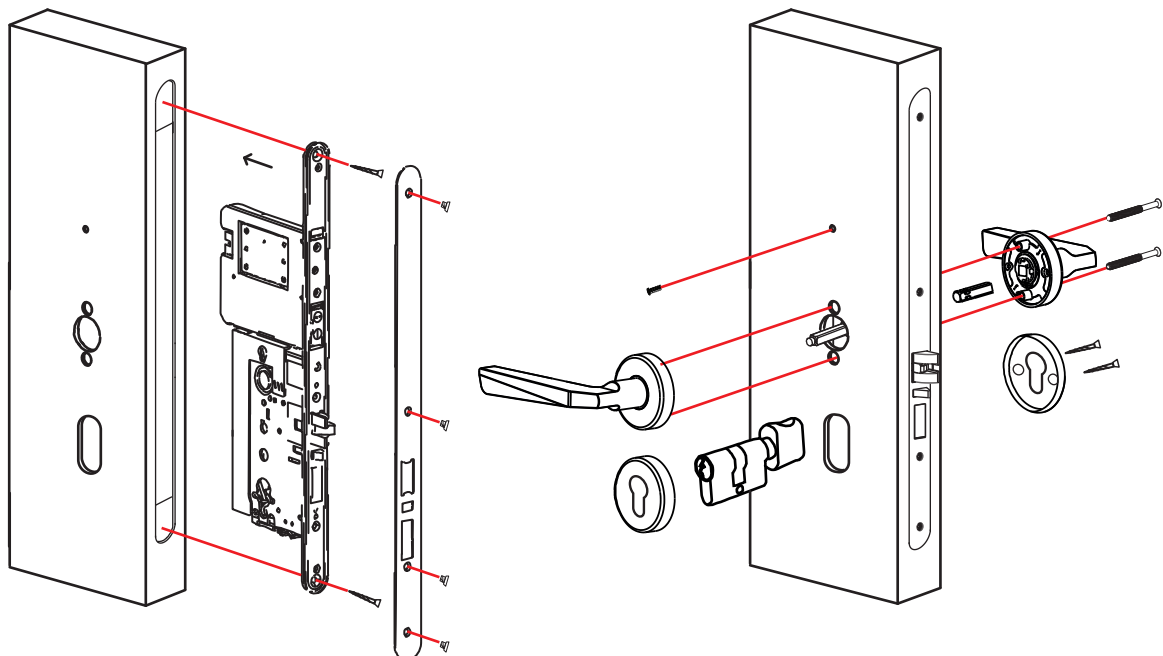
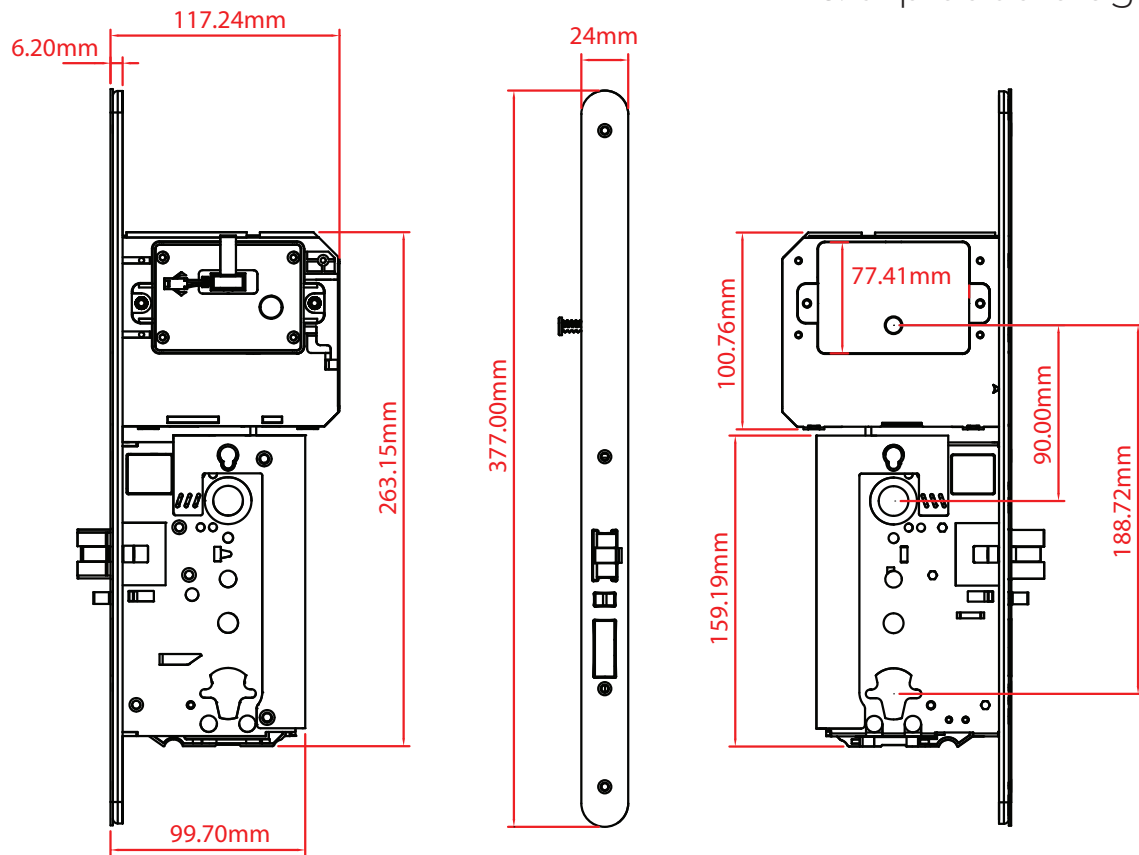
TLJ locks works with samsung smart things when utilising a TLJ Zpad as well as Amazon Alexa via the SmartThings & Amazon eco-system sync.



Z-Wave Alliance approved, smart home wireless protocol with the convenient SmartStart and the military grade security with S2



Dimensions & exploded diagram



TLJ Access Control

68/78 Leads Road, Hull, East Yorkshire, HU7 0BY, UK
www.TLJgroup.com 0044 (0)1482 830334



TLJ access
control

Part of the **TLJ** Group